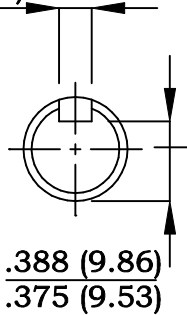
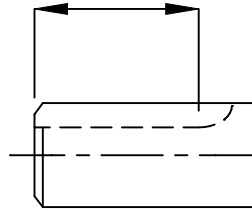


.1875 (4.76)
.1895 (4.81)



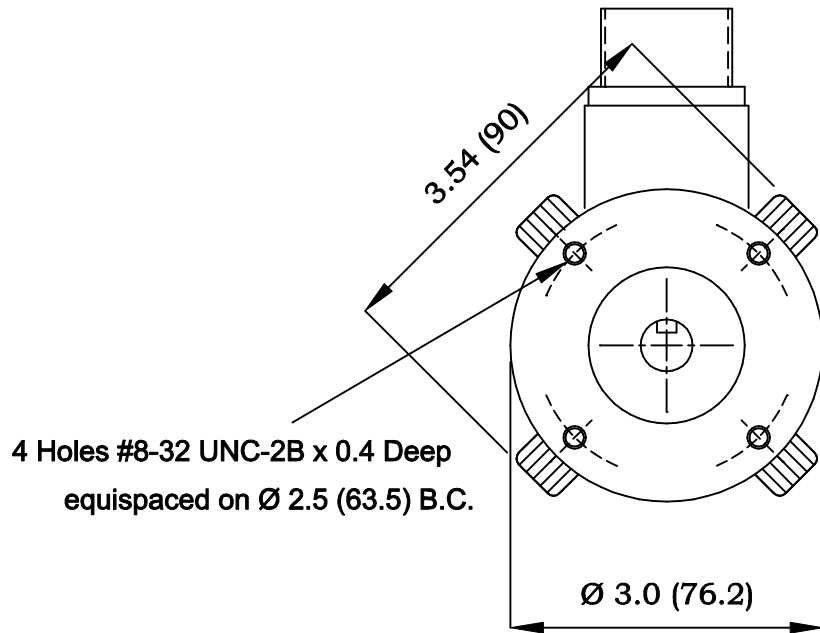
0.5 min (12.7)



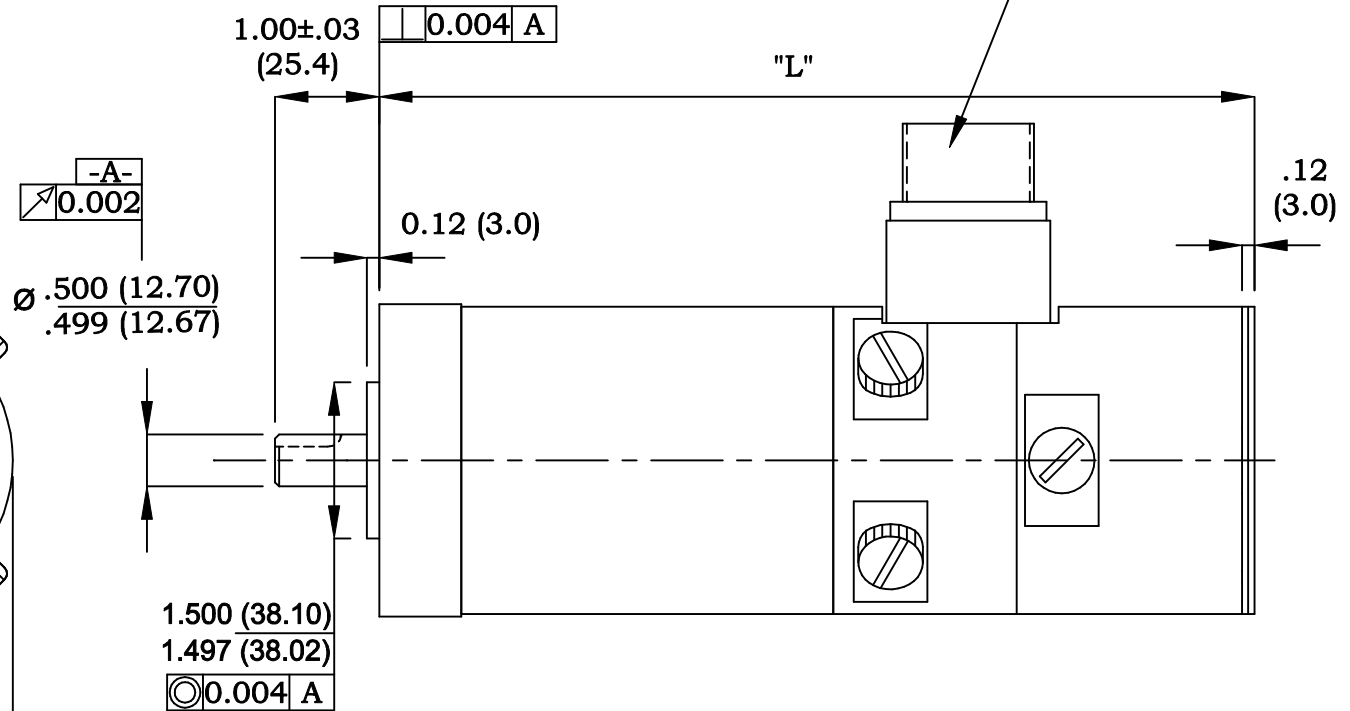
Keyway Detail

Motor Part Number	Length "L"
TT 2041-1011	6.97 (177)
TT 2042-1011	8.42 (214)
TT 2043-1011	9.14 (233)
TT 2045-1011	10.60 (269)

Motor & Tach
MS3102E-20-29P



4 Holes #8-32 UNC-2B x 0.4 Deep
equispaced on Ø 2.5 (63.5) B.C.



Notes :-

1. With a positive current applied to Pins G & H with respect to Pins J & K of motor, rotation shall be clockwise facing mounting end of motor.
With this rotation, a positive voltage shall be generated on Pin L with respect to Pin M of tach.
2. Motor can be mounted in any position.
3. All dimensions in inches with mm in ()

Tolerances.						Scale :		Weight :	
X.XX = ± 0.015						NTS			
X.XXX = ± 0.005						Material :			
Ang. Dim. = ± 1°						Remove all burrs and sharp corners			
Date						Name			
Drawn 4/1/08						POB			
2	0268	23/7/08	POB		App'd				
Issue	ECO. No.	Date	Name	App'd	Norm				
bobry servo-electronic ag						Outline - Rare Earth Magnet Servomotor			
						TT 204X-1011			
						TT 204X-1011			
						Sheet 1 of 1			