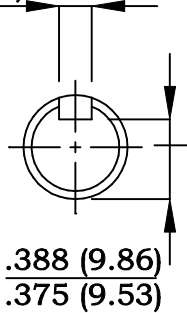
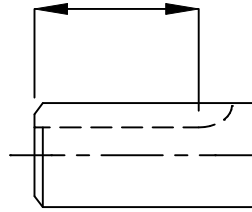


.1875 (4.76)
.1895 (4.81)



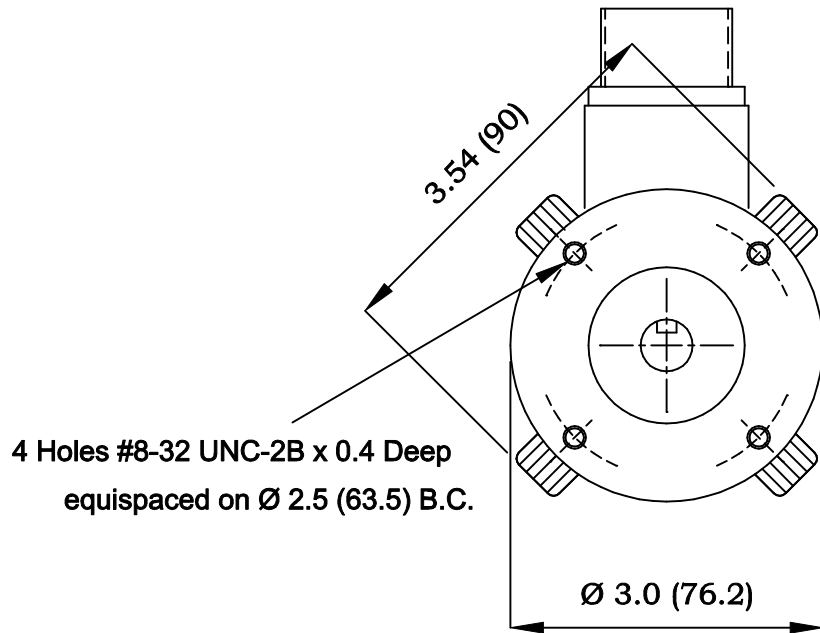
0.5 min (12.7)



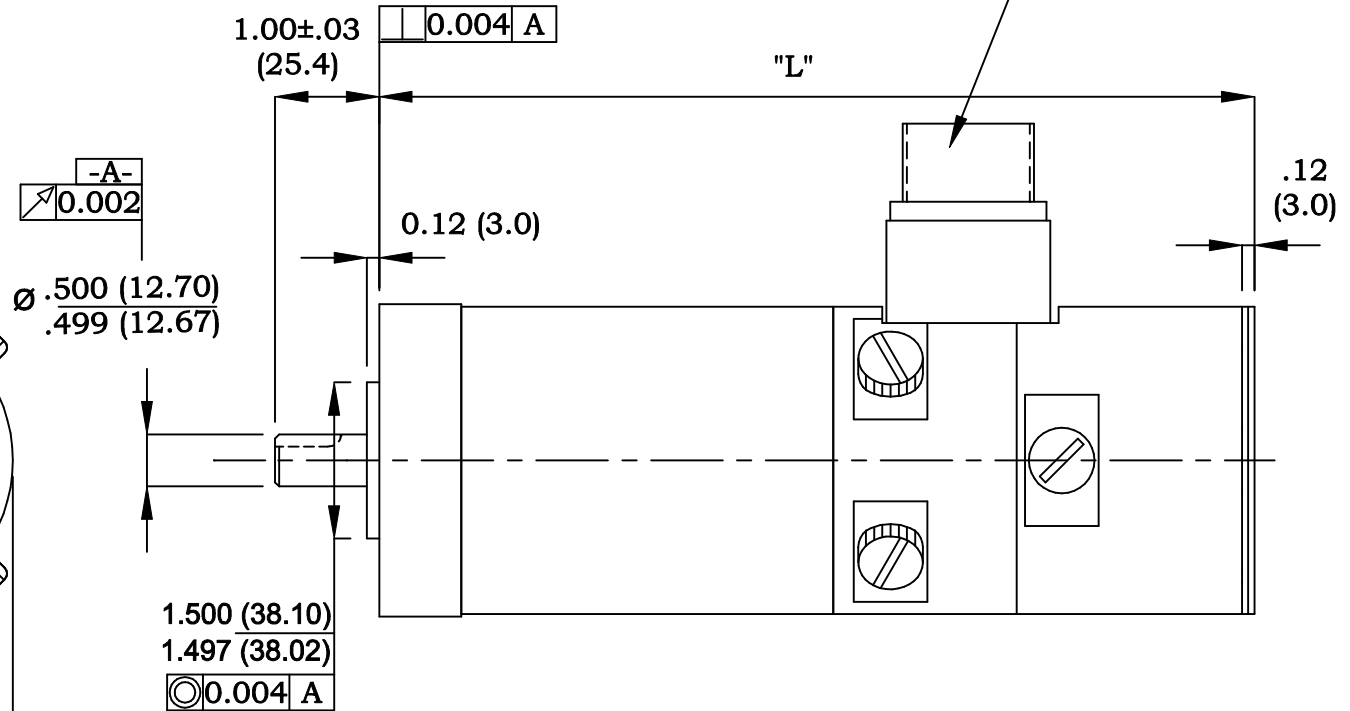
Keyway Detail

Motor Part Number	Length "L"
TT 2032-1011	6.26 (159)
TT 2033-1011	6.97 (177)

Motor & Tach
MS3102E-20-29P



4 Holes #8-32 UNC-2B x 0.4 Deep
equispaced on Ø 2.5 (63.5) B.C.



Notes :-

1. With a positive current applied to Pins G & H with respect to Pins J & K of motor, rotation shall be clockwise facing mounting end of motor.
With this rotation, a positive voltage shall be generated on Pin L with respect to Pin M of tach.
2. Motor can be mounted in any position.
3. All dimensions in inches with mm in ()

Tolerances.						Scale :	Weight :	
X.XX = ± 0.015						NTS		
X.XXX = ± 0.005								
Ang. Dim. = ± 1°						Material :		
						Remove all burrs and sharp corners		
						Outline - Rare Earth Magnet Servomotor		
						TT 203X-1011		
						TT 203X-1011		
						Sheet 1 of 1		

Issue	ECO. No.	Date	Name	App'd	Norm	Date	Name
2	0268	23/7/08	POB	App'd		4/1/08	POB

bobry servo-electronic ag

TT 203X-1011