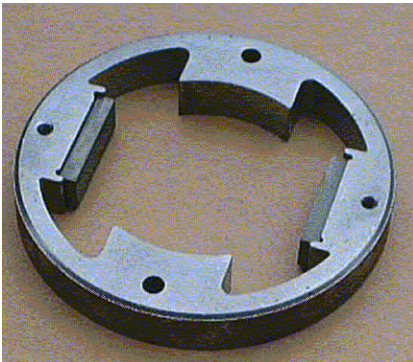


## DC Tachogenerator TGF 2030-147 / - 162

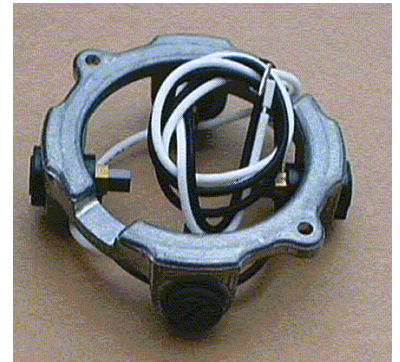
(Used in the TT4.0, TT4.2, TT4.5, TT5.3, TT5.8, Series of DC Servomotor)



Magnet Ring



Tach Armature

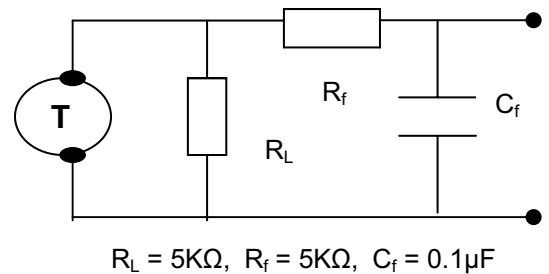


Brush Ring Assembly

The TGF2030 is a frameless 4-pole 18.9V/Krpm D.C. tachogenerator. The standard Hub is bored to fit a shaft diameter of 12mm (0.4725"), but different hub sizes can be catered.

Item	Callan Technology Part Number
TGF 2030 Magnet Ring Assembly	M35002-201
TGF 2030-147 / 162 Armature	M35001-1XX / 2XX
TGF 1810 Brush Ring Assembly	M35003-003

**\*\*Tach Ripple test Conditions**



### Standard Features

- 18.9v/Krpm Back EMF voltage
- Fits a 12mm (0.4725") shaft
- Coated with Epoxy Type 3M/262
- Temperature Range up to 150°C
- Speed Range up to 5,000 rpm

### Options

- Special Voltage Windings
- Various Mechanical variations

### Tach Armature Details

	Symbol	Units	Tolerance	2030-147				2030-162			
				A	B	C	D	A	B	C	D
Nominal Back EMF Voltage	$K_G$	V/Krpm	+/-10%	18.9	57	38	47	18.9	24	30	38
**Voltage Ripple	$V_r$	%(pk-pk/avg)	Max	2	2	2	2	2	2	2	2
Inductance	$L_G$	mH	+/-30%	24	218	102	159	24	38	57	102
DC Resistance	$R_T$	$\Omega$	+/- 12.5%	26	250	110	172	26	41	65	110
Mass	M	grams	/	640	640	640	640	640	640	640	640