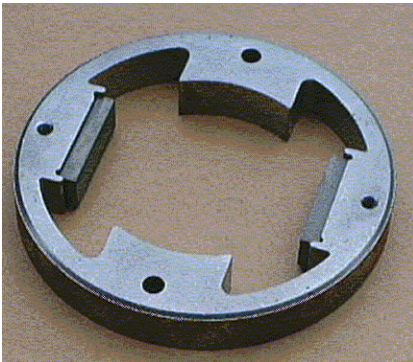


DC Tachogenerator TGF 1810-147

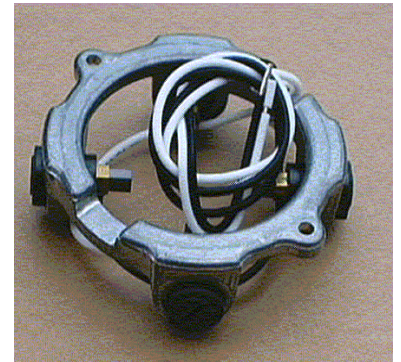
(Used in the TT295X, TT299X Series of DC Servomotor)



Magnet Ring



Tach Armature

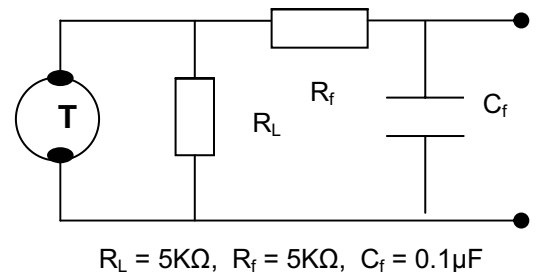


Brush Ring Assembly

The TGF1810 is a frameless 4-pole 12.5V/Krpm D.C. tachogenerator. The standard Hub is bored to fit a shaft diameter of 12mm (0.4725"), but different hub sizes can be catered.

Item	Callan Technology Part Number
TGF 1810 Magnet Ring Assembly	M35002-200
TGF 1810 A Armature	M35001-0XX
TGF 1810 Brush Ring Assembly	M35003-003

****Tach Ripple test Conditions**



Standard Features

- 12.5v/Krpm Back EMF voltage
- Fits a 12mm (0.4725") shaft
- Coated with Epoxy Type 3M/262
- Temperature Range up to 150°C
- Speed Range up to 6,000 rpm

Options

- Special Voltage Windings
- Various Mechanical variations

Tach Armature Details

	Symbol	Units	Tolerance	A	B	C	D	E	G
Nominal Back EMF Voltage	K_G	V/Krpm	10% ±	12.5	20.0	7.0	32.5	15.7	10.0
**Voltage Ripple (Max)	V_r	% (pk-pk/avg)	Max	4	4	4	4	4	4
Inductance	L_G	mH	30% ±	24	62	7.6	156	39	7.3
DC Resistance	R_T	Ω	± 12.5%	35	93	13	234	59	16.3
Mass	M	grams	/	470	470	470	470	470	470