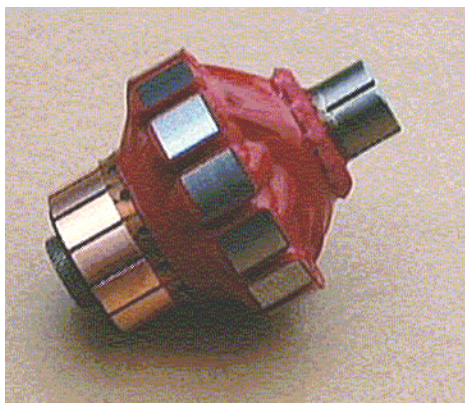


DC Tachogenerator TGF 1568

(Used in the TT200X, TT202X Series of D.C. Servomotor)



Tach Armature

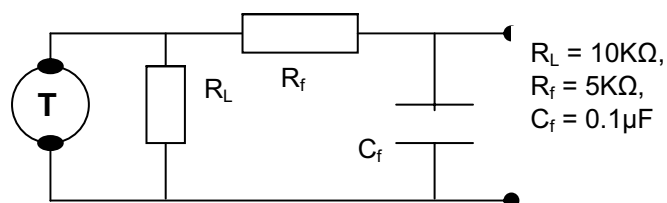


Magnet Ring

The TGF1568 is a frameless, 2-pole 7.0V/Krpm D.C. tachogenerator. The standard Hub is bored to fit a shaft diameter of 9.5mm (0.3745"), but different hub sizes can be catered for.

Item	Callan Technology Part Number
TGF 1568 Armature	M35001-412
TGF1568 Magnet Ring	M72101-008

**Tach Ripple test Conditions



Standard Features

- 7.0v/Krpm Back EMF voltage
- Fits a 9.5mm (0.3745") shaft
- Coated with Epoxy Type 3M/262
- Temperature Range up to 150°C
- Speed Range up to 6,000 rpm

Options

- Special Voltage Windings
- Various Mechanical variations

Tach Armature Details

	<u>Symbol</u>	<u>Units</u>	<u>Tolerance</u>	<u>Value</u>
Nominal Back EMF Voltage	K_G	V/Krpm	+/- 10%	7.0
**Voltage Ripple (Max)	V_r	% (pk-pk/avg)	Max	6 %
Inductance	L_G	mH	+/- 30%	25
DC Resistance	R_T	Ω	+/- 12.5%	43
Mass	M	Grams	/	100