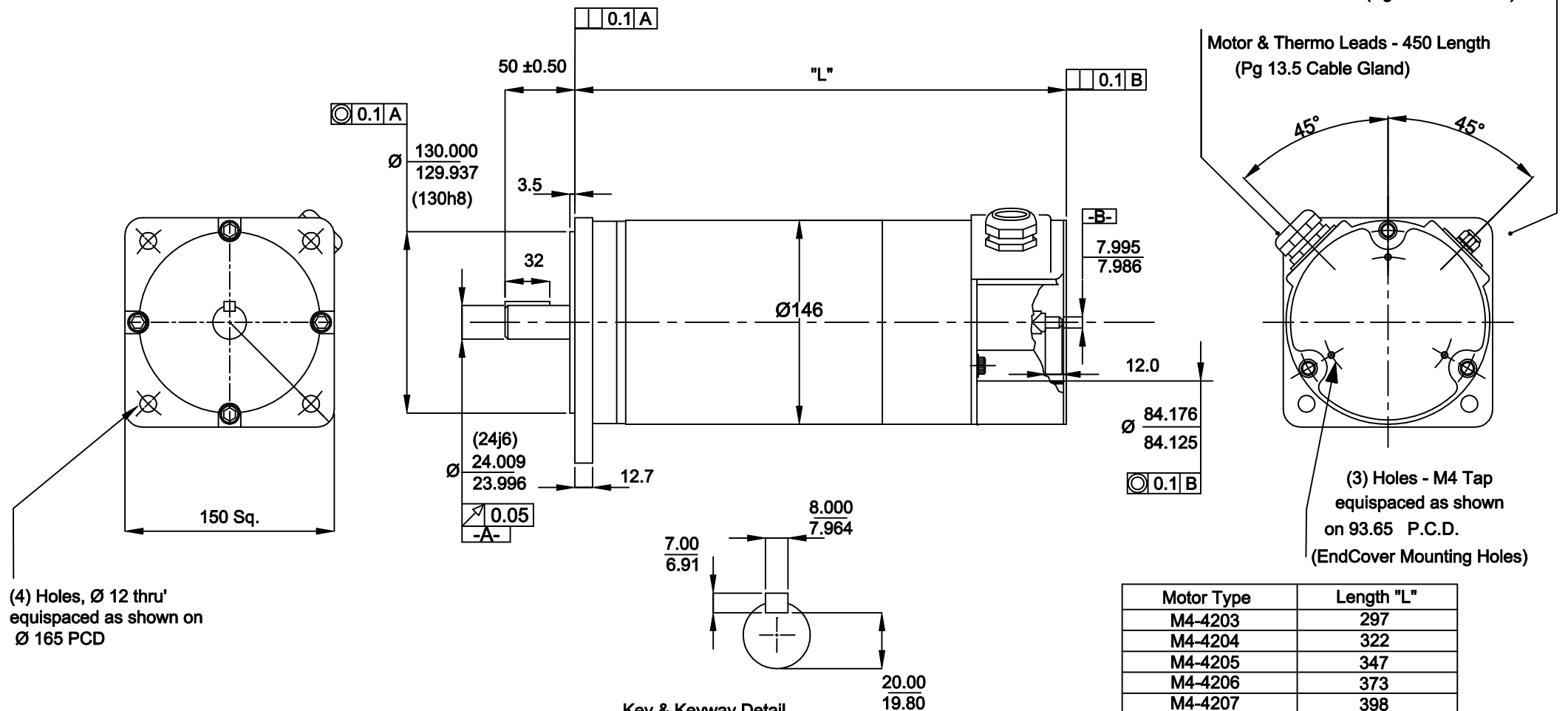


Tach Leads - 450 Length  
(Pg 7 Cable Gland)

Motor & Thermo Leads - 450 Length  
(Pg 13.5 Cable Gland)



(4) Holes, Ø 12 thru' equispaced as shown on Ø 165 PCD

(3) Holes - M4 Tap equispaced as shown on 93.65 P.C.D. (EndCover Mounting Holes)

Key & Keyway Detail

Motor Type	Length "L"
M4-4203	297
M4-4204	322
M4-4205	347
M4-4206	373
M4-4207	398
M4-4208	424
M4-4209	449

- Notes:-
1. With a positive current applied to green lead (x3) with respect to orange lead (x3) of motor, rotation shall be clockwise facing mounting end of motor. With this rotation a positive voltage shall be generated on black lead of tach with respect to white lead.
  2. Motor can be mounted in any position
  3. Thermostat set to open at 90°C ± 6°C & close at 70° ± 6°C falling. N.C. contacts rated to 3.0 Amps, 250V. AC., (2) Yellow leads
  4. All dimensions in mm.

					Tolerances. X.X = ± 0.3 X.XX = ± 0.1 Ang. Dim. = ± 1°		Scale : NTS		Weight :		
							Material : SEE NOTES Remove all burrs and sharp corners				
					Date	Name	<b>Rare Earth Servomotor with Tach</b> <b>M4-420X-21001-000</b>				
					Drawn	21/5/08					POB
					App'd						
Issue	ECO. No.	Date	Name	App'd	Norm						
<b>bobry servo-electronic ag</b>								<b>M4-420X-21001-000</b>		Sheet <b>1</b> of 1	