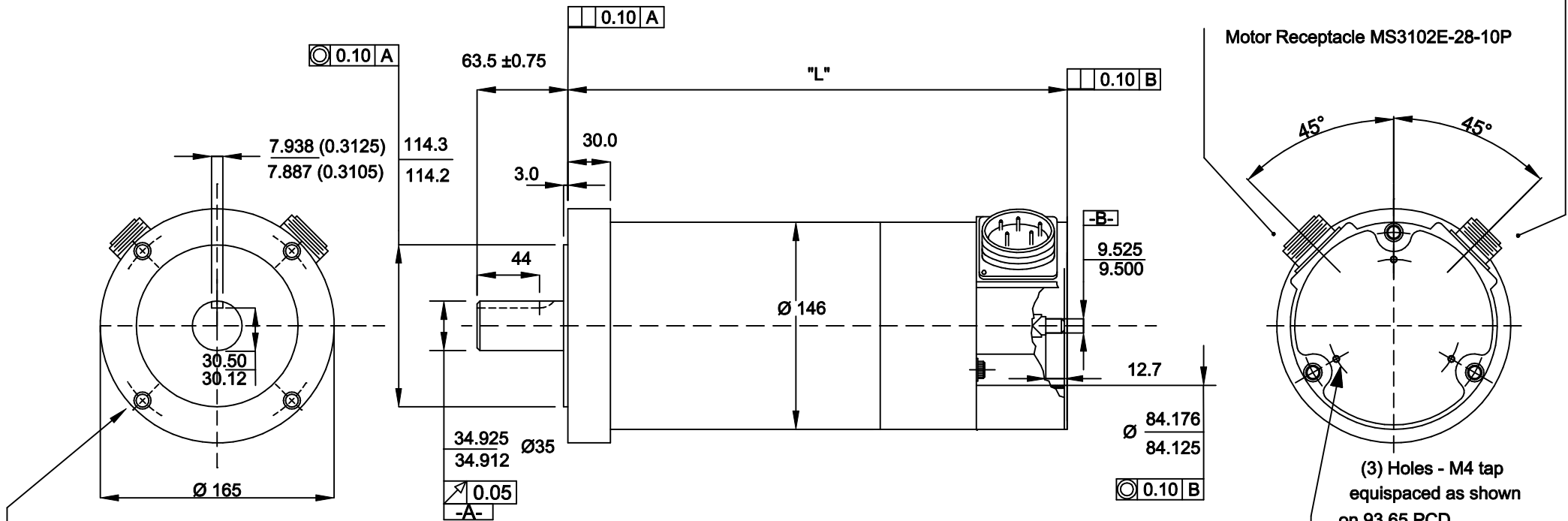


Tacho Receptacle MS3102E-20-33P

Motor Receptacle MS3102E-28-10P



M10 thread x 19 min deep
(4) Holes equispaced on $\varnothing 149.2$ PCD

(3) Holes - M4 tap
equispaced as shown
on 93.65 PCD
(EndCover Mounting Holes)

Motor Type	Length "L"
M4-4203	297
M4-4204	322
M4-4205	347
M4-4206	373
M4-4207	398
M4-4208	424
M4-4209	449

Notes:-

1. With a positive current applied to pin C with respect to pin D, rotation shall be clockwise facing mounting end of motor. With this rotation a positive voltage shall be generated on pin J of tach with respect to pin K.
2. Motor can be mounted in any position
3. Thermostat set to open at $90^\circ\text{C} \pm 6^\circ\text{C}$ & close at $70^\circ \pm 6^\circ\text{C}$ falling. N.C. contacts rated to 3.0 Amps, 250V. AC., (2) Yellow leads
4. All dimensions in mm.

					Tolerances. X.XX = ± 0.015 X.XXX = ± 0.005 Ang. Dim. = $\pm 1^\circ$		Scale : NTS		Weight :	
							Material : SEE NOTES Remove all burrs and sharp corners			
					Date	Name	Motor Outline M4-420x -00011-000			
					Drawn	25/11/05				POB
					App'd					
Issue	ECO. No.	Date	Name	App'd	Norm					
bobry servo-electronic ag							M4-420x - 00011 - 000			
									Sheet 1 of 1	