

POWER LEAD CONFIGURATION

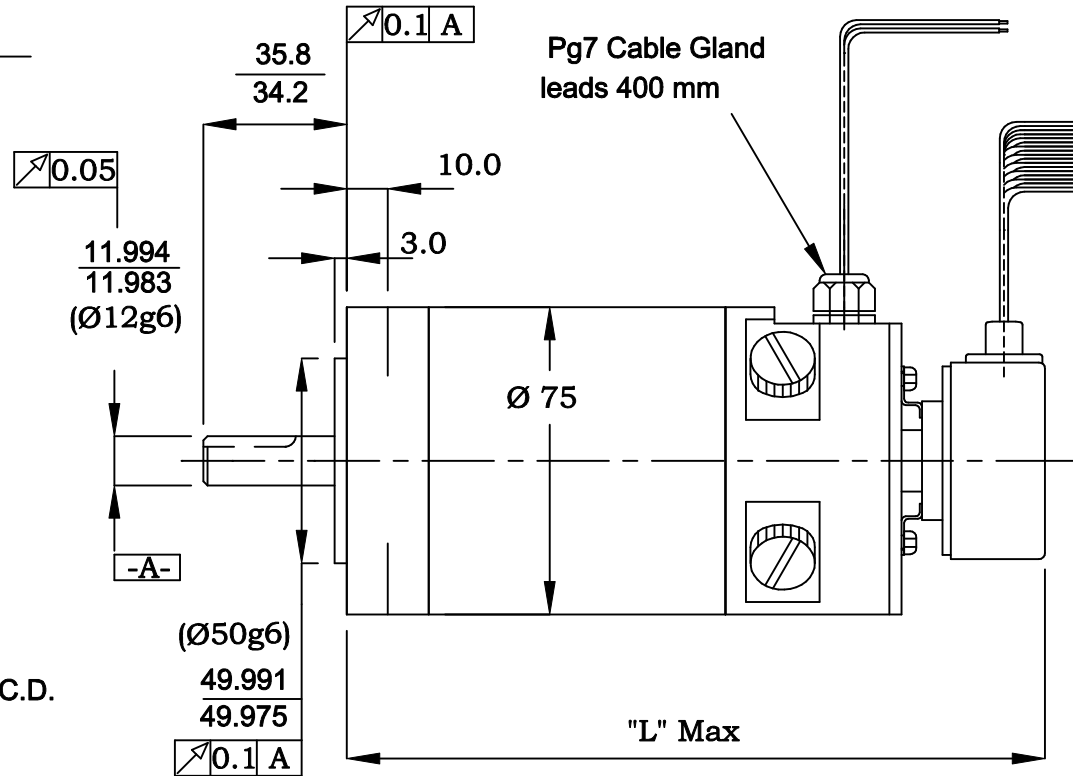
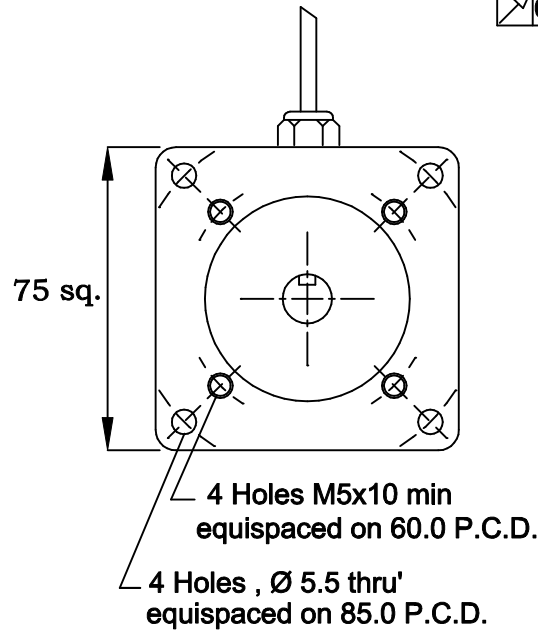
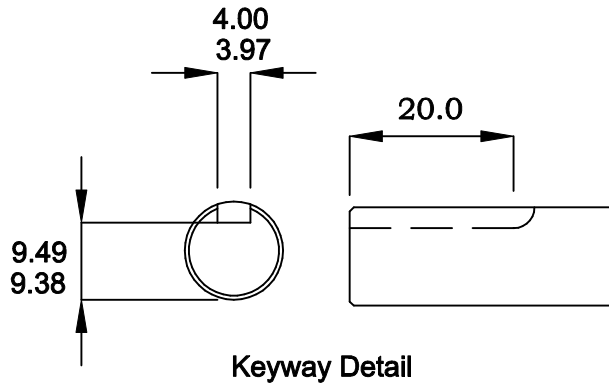
+ ve :- Green
 - ve :- Orange

ENCODER CONN. PINOUT

Red :- + 5 V DC
 Black :- GND
 Blue :- CH A
 Blue/Black :- CH A (INV)

Green :- CH B
 Green/Black : CH B (INV)
 Yellow : CH Z
 Yellow/Black: CH Z (INV)

2048 ppr.



Part Number	Length "L"
M4-2003-0000V-000	138
M4-2004-0000V-000	156
M4-2005-0000V-000	175
M4-2006-0000V-000	193

Notes :-

- With a positive current applied to green lead with respect to orange lead of motor, rotation shall be clockwise facing mounting end of motor. With this rotation, encoder channel B leads encoder channel A by 90° electrical.
- Motor can be mounted in any position.

				Tolerances. X.X = ± 0.3 mm X.XX = ± 0.1 mm Ang. Dim. = ± 1°		Scale : NTS		Weight :
				Date 26/6/06		Material : Remove all burrs and sharp corners		
				Name POB		Outline - Rare Earth Magnet Servomotor M4-200X-0000V-000		
1				App'd				
Issue	ECO. No.	Date	Name	App'd	Norm			
bobry servo-electronic ag						M4-200X-0000V-000		
						Sheet 1 of 1		